





Huddersfield

£145,000

THIS DELIGHTFUL HOME FEATURES A BEAUTIFUL LOUNGE, A MODERN KITCHEN, TWO BEDROOMS, AND A STYLISH CONTEMPORARY BATHROOM. THE PROPERTY ALSO BENEFITS FROM REAR GARDEN, PERFECT FOR RELAXING. IT OFFERS A BLEND OF COMFORT AND MODERN LIVING, MAKING IT AN IDEAL CHOICE FOR THOSE SEEKING A LOVELY HOME.

This delightful home features a beautiful lounge, a modern kitchen, two bedrooms, and a stylish contemporary bathroom. The property also benefits from rear garden, perfect for relaxing. It offers a blend of comfort and modern living, making it an ideal choice for those seeking a lovely home.

Lounge

Upon entering, the door opens into a beautifully presented lounge featuring characterful exposed stone walls and a stunning fireplace. The room also boasts impressive high ceilings and a tasteful blend of modern decor, creating a welcoming and spacious atmosphere.

Kitchen

The kitchen is modern and well-equipped,

featuring a range of wall and base units, along with an integrated oven and hob. It also offers plumbing for a washing machine and space for a fridge freezer. A door leads directly to the cellar and the rear garden, adding convenience and practicality.

Landing

Doors lead from the lounge to the two bedrooms and the contemporary house bathroom.

Bedroom one

The double bedroom features beautiful high ceilings, modern décor, and a charming feature fireplace, creating a stylish and inviting space.

Bedroom two

The second bedroom is also a good size, boasting high ceilings and modern décor.

Bathroom

The contemporary bathroom suite includes a panel bath with a shower over, featuring dual shower heads. It also offers a wash basin with a vanity unit below and a low-level WC, combining style and functionality.

Garden

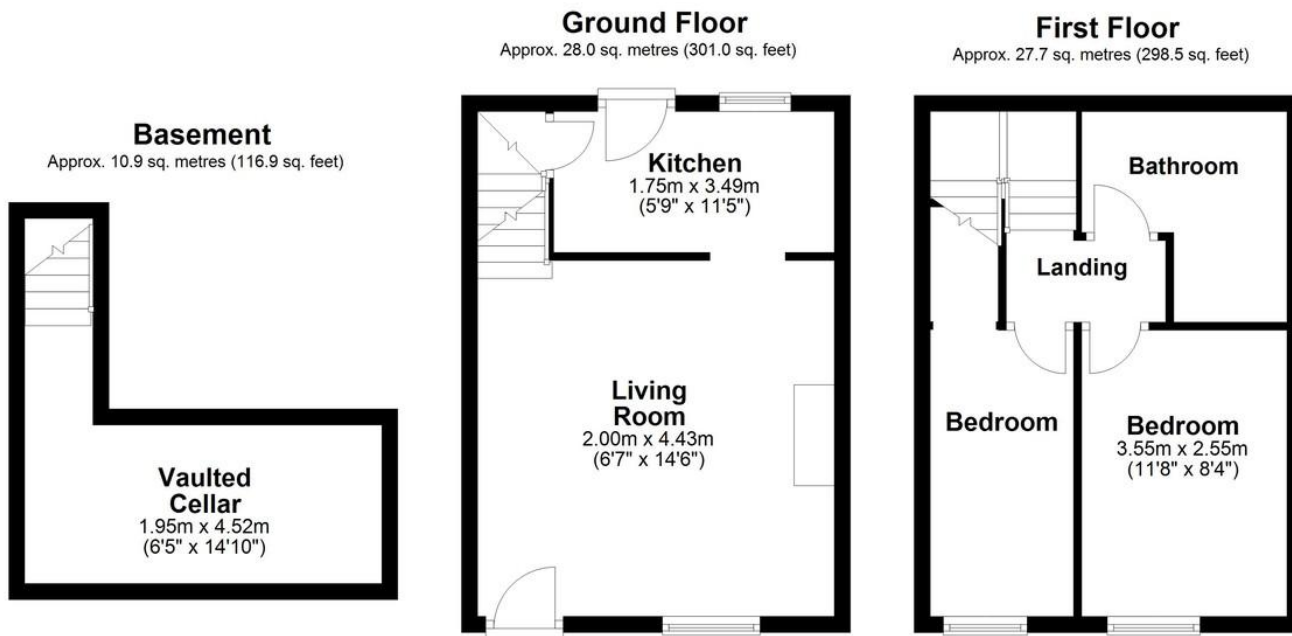
The rear garden is fantastic and low maintenance, providing the perfect space for











Total area: approx. 66.6 sq. metres (716.4 sq. feet)

%image_c_21_484%

%image_c_22_484%

%image_c_23_484%

Energy Efficiency

Very energy efficient - lower run

(92-100)

A